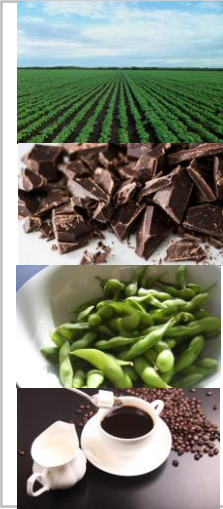
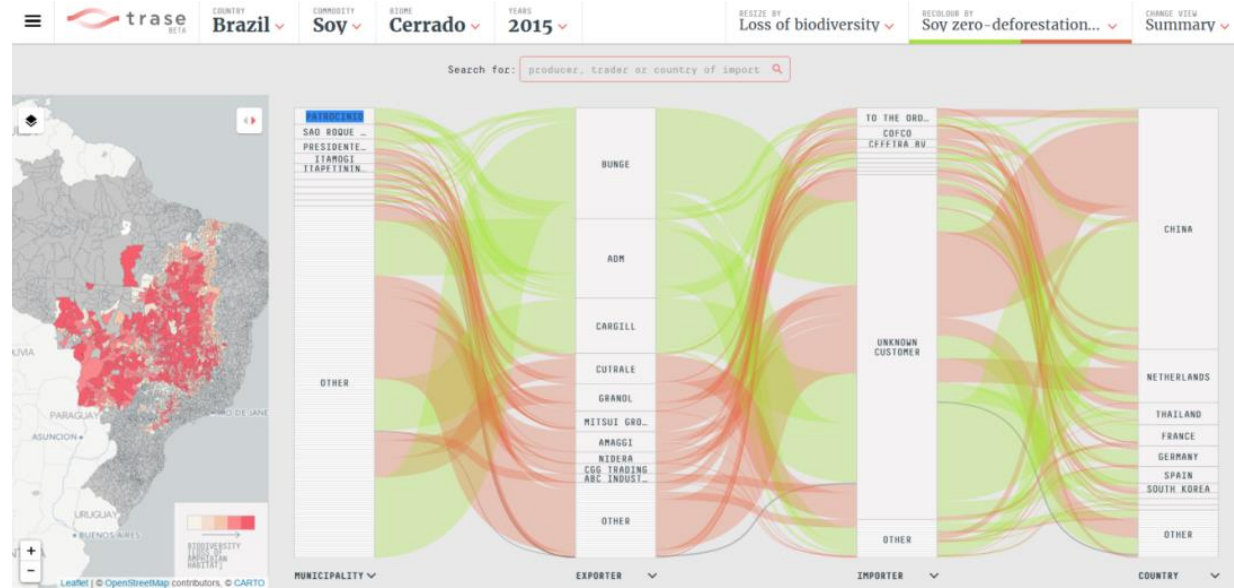


Assessing trade-linked biodiversity impacts

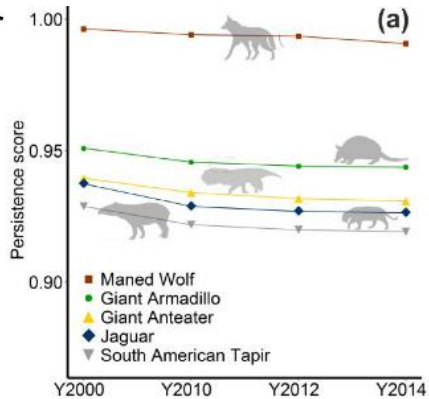
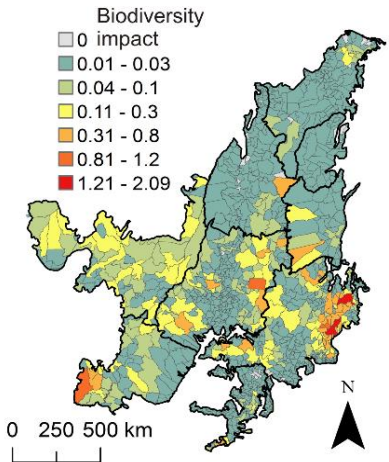


- Trade Hub project examines impacts of trade on social and environmental indicators
- Focus on key country-commodity contexts e.g. soy in Brazil, palm oil in Indonesia
- SEI-Y focusing on linking trade models e.g. TRASE to biodiversity indicators
- Majority of deforestation concentrated in only a few global locations and trade flows



- Many studies focus on deforestation, which is limited in representing different aspects of biodiversity
- Different indicators often use the same data inputs but vary in complexity and accessibility
- The persistence score provides high resolution, spatially explicit and species specific impacts for selected crops
- Key information gaps include recent crop distribution data and lack of supply chain transparency

Municipality



Green et al., 2019; Duran et al., 2020